

PROJECT:

**SAVOIE MODULAR  
 MODEL 3**

**REVISIONS**

#	DATE
1	9/18/2024

UPCHARGE REVISIONS

#	DATE

NOTES:

SCALE:

1/4"=1'

DRAWN BY:

JOANNE TARR

JTARR@HANCOCKLUMBER.COM

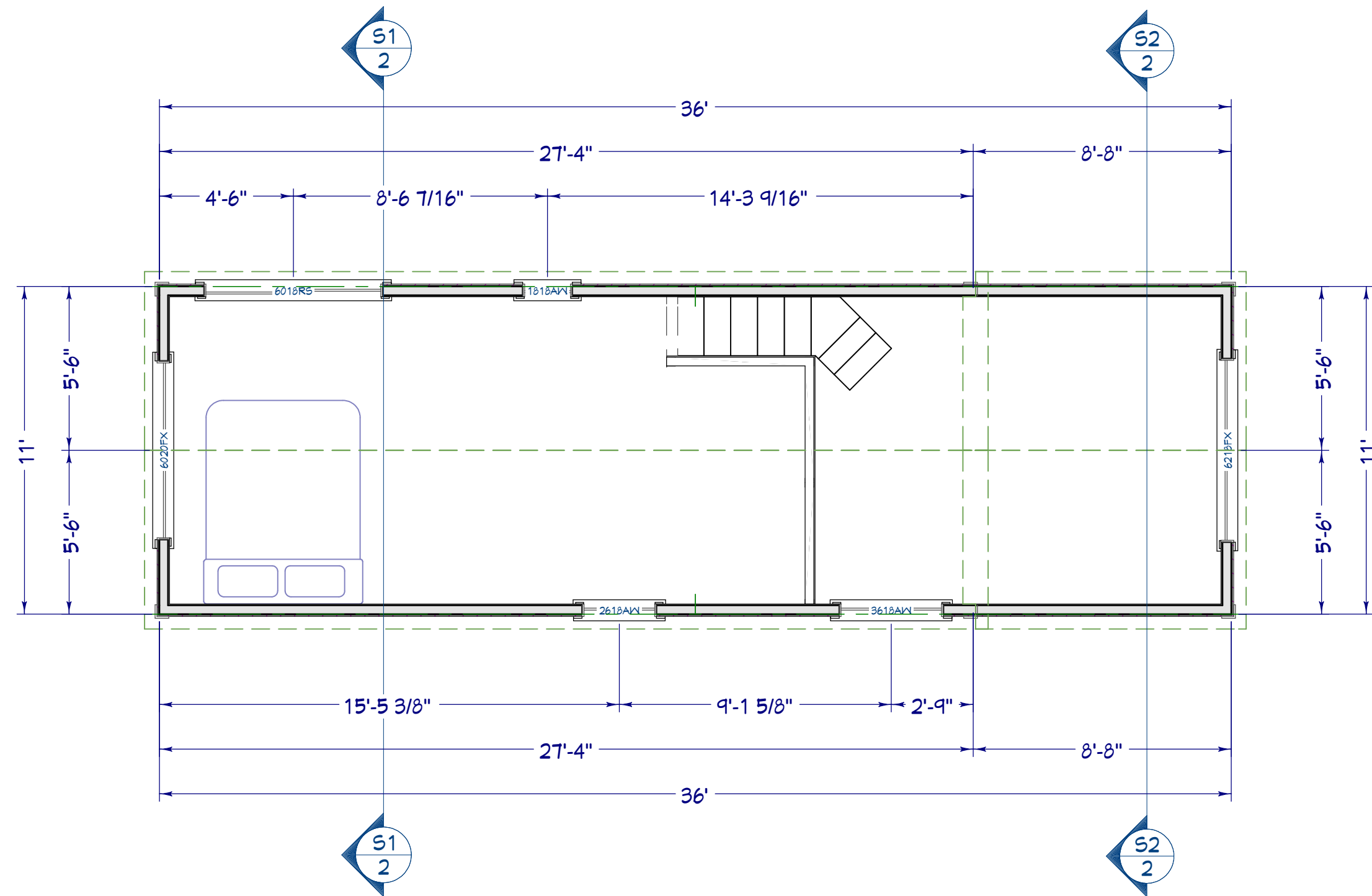
DIRECT LINE: 207-430-4888

PRINT DATE:

9/18/2024

PAGE:

1



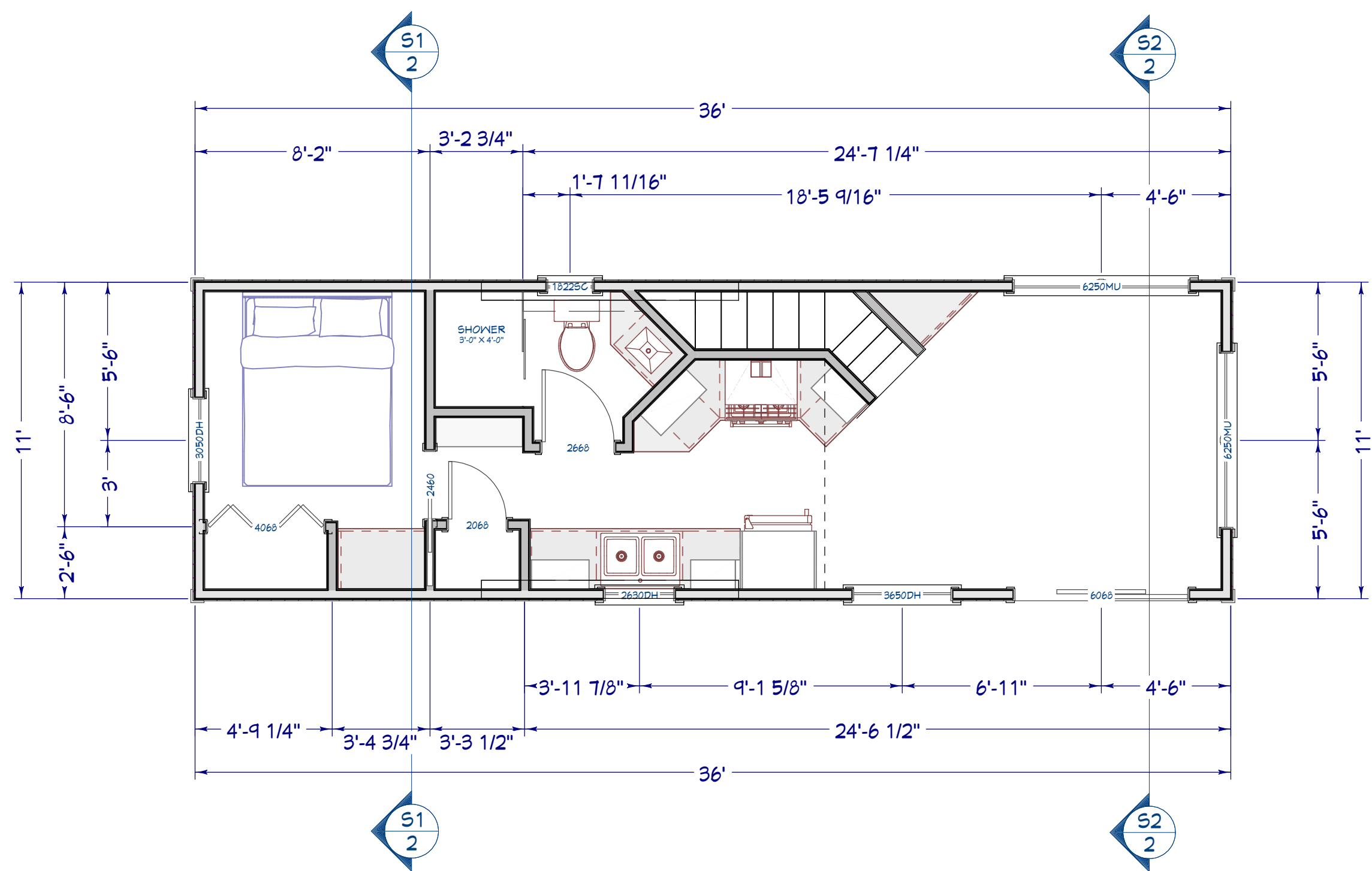
SECOND FLOOR PLAN



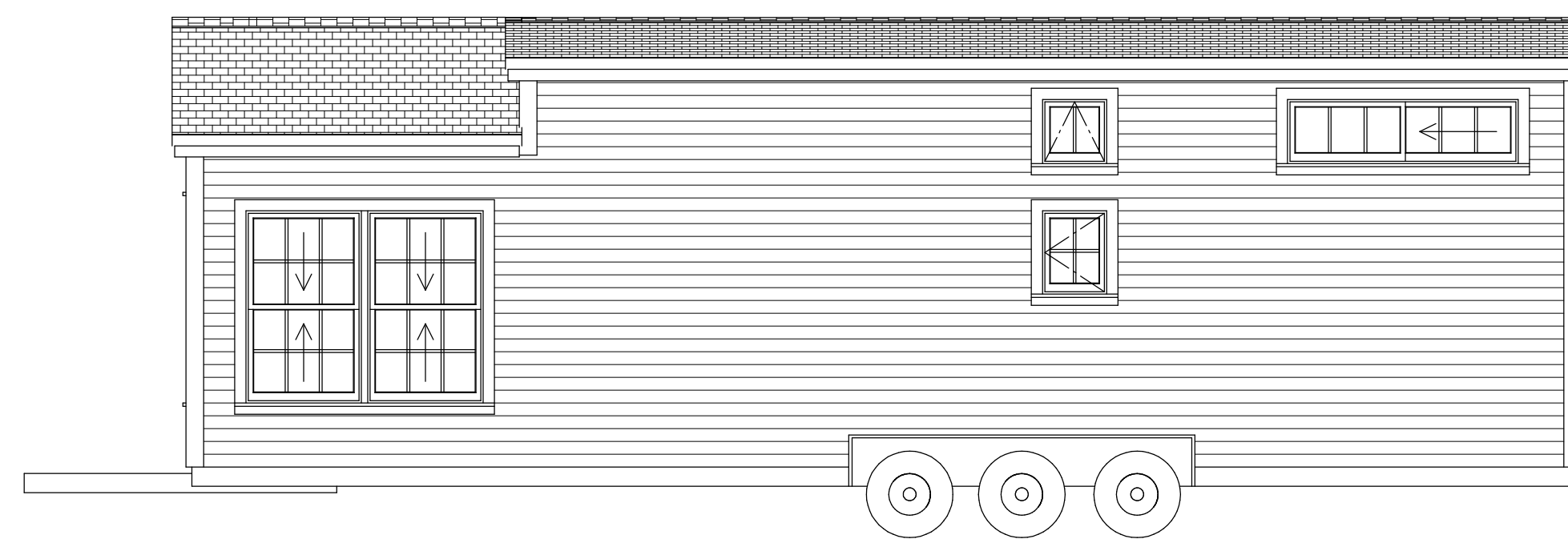
FRONT ELEVATION



RIGHT ELEVATION



FIRST FLOOR PLAN



BACK ELEVATION



LEFT ELEVATION

**DISCLAIMER:** HANCOCK LUMBER HAS PROVIDED THESE DRAWINGS AS A SERVICE TO OUR CUSTOMERS. THESE DRAWINGS HAVE NOT BEEN PREPARED OR REVIEWED BY REGISTERED ARCHITECT OR ENGINEER AND ARE FOR ILLUSTRATIVE OR INFORMATIONAL PURPOSES ONLY NOT AS A BASIS OF CONSTRUCTION. WE HIGHLY RECOMMEND THE RETENTION OF A REGISTERED ARCHITECT OR ENGINEER FOR DETAILED CONSTRUCTION DRAWINGS. HANCOCK LUMBER WILL ASSUME NO LIABILITY IF THESE DRAWINGS ARE USED AS A BASIS FOR CONSTRUCTION.

PROJECT:

**SAYOIE MODULAR  
 MODEL 3**

**REVISIONS**

#	DATE
1	9/18/2024

UPCHARGE REVISIONS

#	DATE

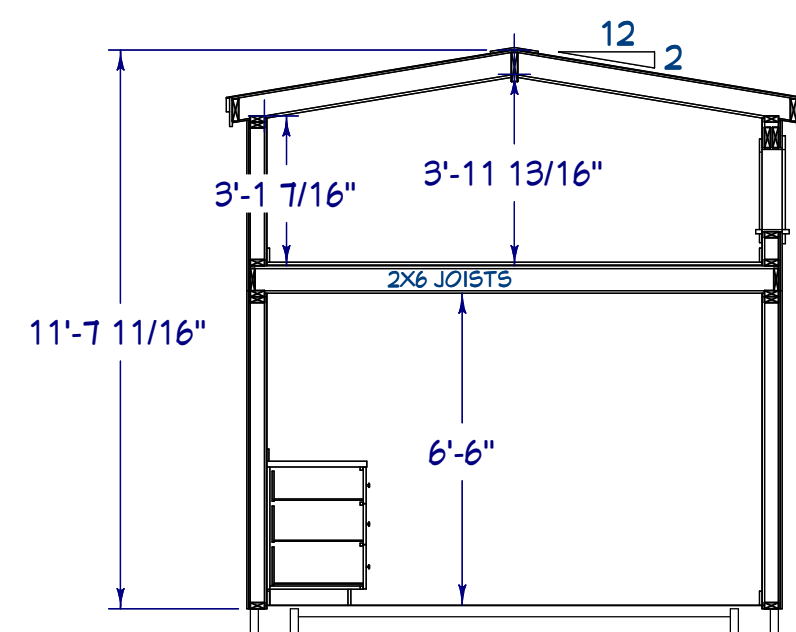
NOTES:

SCALE:

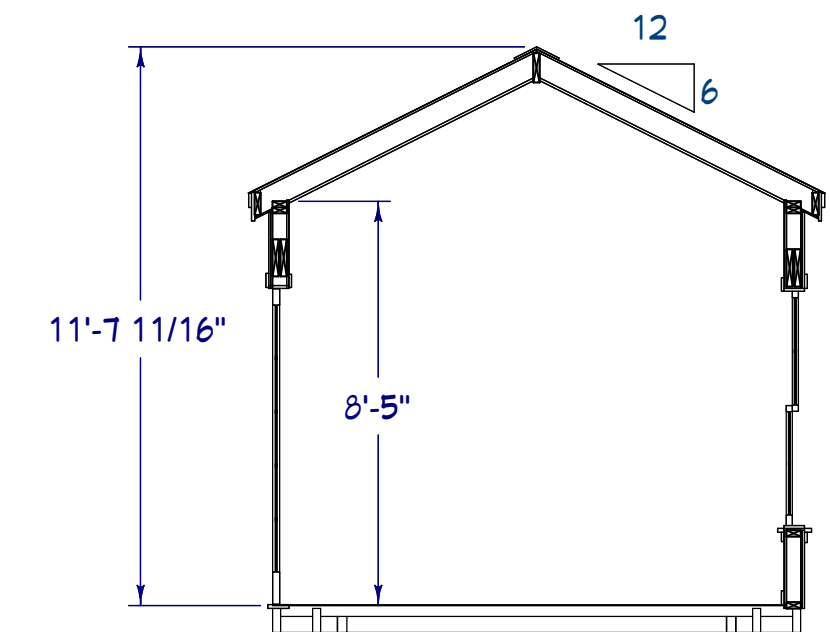
DRAWN BY:  
**JOANNE TARR**  
 JTARR@HANCOCKLUMBER.COM  
 DIRECT LINE: 207-430-4688

PRINT DATE:  
 9/18/2024

PAGE:  
**2**



(S1) CROSS SECTION 1  
 1/4 in = 1 ft



(S2) CROSS SECTION 2  
 1/4 in = 1 ft

**DISCLAIMER: HANCOCK LUMBER HAS PROVIDED THESE DRAWINGS AS A SERVICE TO OUR CUSTOMERS. THESE DRAWINGS HAVE NOT BEEN PREPARED OR REVIEWED BY REGISTERED ARCHITECT OR ENGINEER AND ARE FOR ILLUSTRATIVE OR INFORMATIONAL PURPOSES ONLY NOT AS A BASIS OF CONSTRUCTION. WE HIGHLY RECOMMEND THE RETENTION OF A REGISTERED ARCHITECT OR ENGINEER FOR DETAILED CONSTRUCTION DRAWINGS. HANCOCK LUMBER WILL ASSUME NO LIABILITY IF THESE DRAWINGS ARE USED AS A BASIS FOR CONSTRUCTION.**